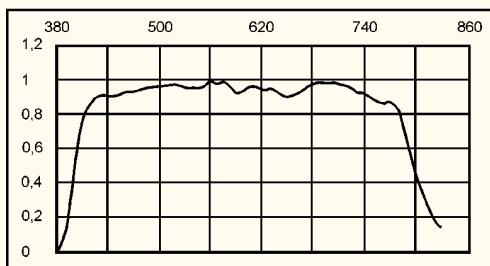


OPTICAL RADIATION

Radiometric Probe Head Type FLA603RW4



- ▶ High quality radiometric probe head for precise determination of the radiation intensity in the visible wavelength range from 400 to 800nm.
- ▶ Measurement geometries with cosine diffusor instead of simple diffusing screen for highest quality requirements.
- ▶ Three measuring channels with different sensitivity.



Type:

Radiometric probe head
with ALMEMO® connecting cable 2m long
incl. factory calibration certificate
with calibration in mW/cm²
for evaluation of
LED diodes and lasers

Order No. FLA603RW4

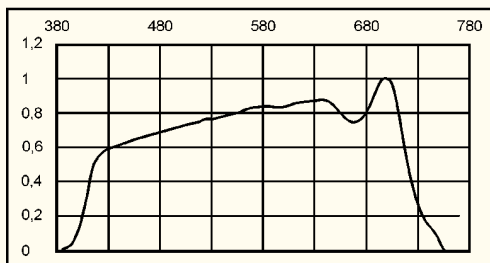
Technical Data:

Measuring range:	0.00004 to 10 mW/cm ²
Resolution:	10 nW/cm ²
Sensitivity:	approx. 500nA/(mW/cm ²)
Spectral sensitivity:	400 to 800nm
Max. cos deviation:	< 5%
Cos diffusor:	diameter 15mm
Dimensions:	diameter 37mm, height 50mm

Photosynthesis Probe Head FLA603PS4



- ▶ High quality measuring head for direct evaluation of the Photosynthetic Active Radiation (PAR) in the wavelength range from 400 to 700nm.
- ▶ Measurement geometries with cosine diffusor instead of simple diffusing screen for highest quality requirements.
- ▶ Waterproof design with clear dome hood as sealing for the diffusor.
- ▶ Three measuring channels with different sensitivity.



Type:

Photosynthesis probe head
with ALMEMO® connecting cable 2m long
incl. factory calibration certificate
with calibration in μmol/(m²·s)
for the measurement of photosynthetic
active intensity of irradiation
in a waterproof design with
clear dome hood (see illustr.)

Order No. FLA603PS4

Ord. No. FLA603PS4WG

Technical Data:

Measuring range:	0.0002 to 5,0 μmol/(m ² ·s)
Resolution:	0.2 μmol/(m ² ·s)
Sensitivity:	approx. 100 nA/(μmol/m ² ·s)
Spectral sensitivity:	400 to 700nm
Max. cos deviation:	< 5%
Cos diffusor:	diameter 15mm
Dimensions:	diameter 37mm, height 35mm

Luminance Probe Head Type FLA603LDM2



- ▶ Luminance measuring head, equipped with achromatically corrected, low stray light optics and high quality $V(\lambda)$ detector according to DIN class B.
- ▶ The external sighting device allows, at a working distance of 1 m, to exactly locate the measuring point, therefore, it is particularly suitable for evaluating the luminance for service and constancy tests.
- ▶ Three measuring channels with different sensitivity.
- ▶ Typical applications:
Luminescent surfaces such as colour monitors, alphanumerical displays, sign plates and light panels, and reflecting surfaces, such as walls and equipment at work places, projecting screens, traffic and sign plates, guided paths and roadway lines.

Type:

Luminance probe head with 1° field of view and external sighting device, DIN quality class B, with ALMEMO® connecting cable 2m long, incl. factory calibration certificate calibration in cd/m^2

Order No. FLA603LDM2

Technical Data:

Measuring range:	0.04 cd/m^2 to 8333 cd/m^2
Smallest resolution:	10 mcd/m^2
Field of view:	1°
Sensitivity:	approx. 30 $\text{pA}/(\text{cd}/\text{m}^2)$
Spectral adaptation:	approxim. to photometric valuat. function $V(\lambda)$ for photopic vision, class B, better than 6%
Operating distance:	1 m
Nominal temperature:	$24^\circ\text{C} \pm 2\text{K}$
Operat./storage temperature:	0 to 60°C / -10 to $+80^\circ\text{C}$
Humidity range:	10 to 90% (non-condensing)
Measuring surface:	21 mm x 21 mm at 1 m operating distance
Meets standards:	IEC 61223-2-5, DIN 5032-T.7
Dimensions:	diameter 30mm, length 150mm

Light Flux Probe Head FLA603LSM4

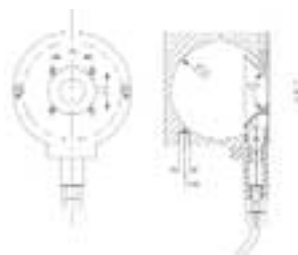


- ▶ High quality measuring head, DIN class B for light flux measurement with Ulbricht globe photometer.
- ▶ Perfect coating of the globe with BaSO_4 for diffuse reflectivity and spectrally neutral reflection quality.
- ▶ Suitable for cold light sources, and lamps with high colour temperature and almost monochromatic radiation (as in LEDs).
- ▶ Examples for applications:
Endoscopes, fiber optic bunches, light emitting diodes.

Type:

Light flux probe head with ALMEMO® connecting cable 2m long and factory calibration certificate

Order No. FLA603LSM4



Technical Data:

Measuring range:	0.001 lm to 250 lm
Smallest resolution:	0.001 lm
Sensitivity:	20 nA/lm
Acceptance angle:	up to 90°
Accuracy:	DIN quality class B
Nominal temperature:	$24^\circ\text{C} \pm 2\text{K}$
Humidity range:	10 to 90 % non-condensing
Operating temperature:	max. 100°C inside globe
Inner diameter of globe:	50mm
Test opening:	12.7mm

